

CINEMATIC CONTINUITY

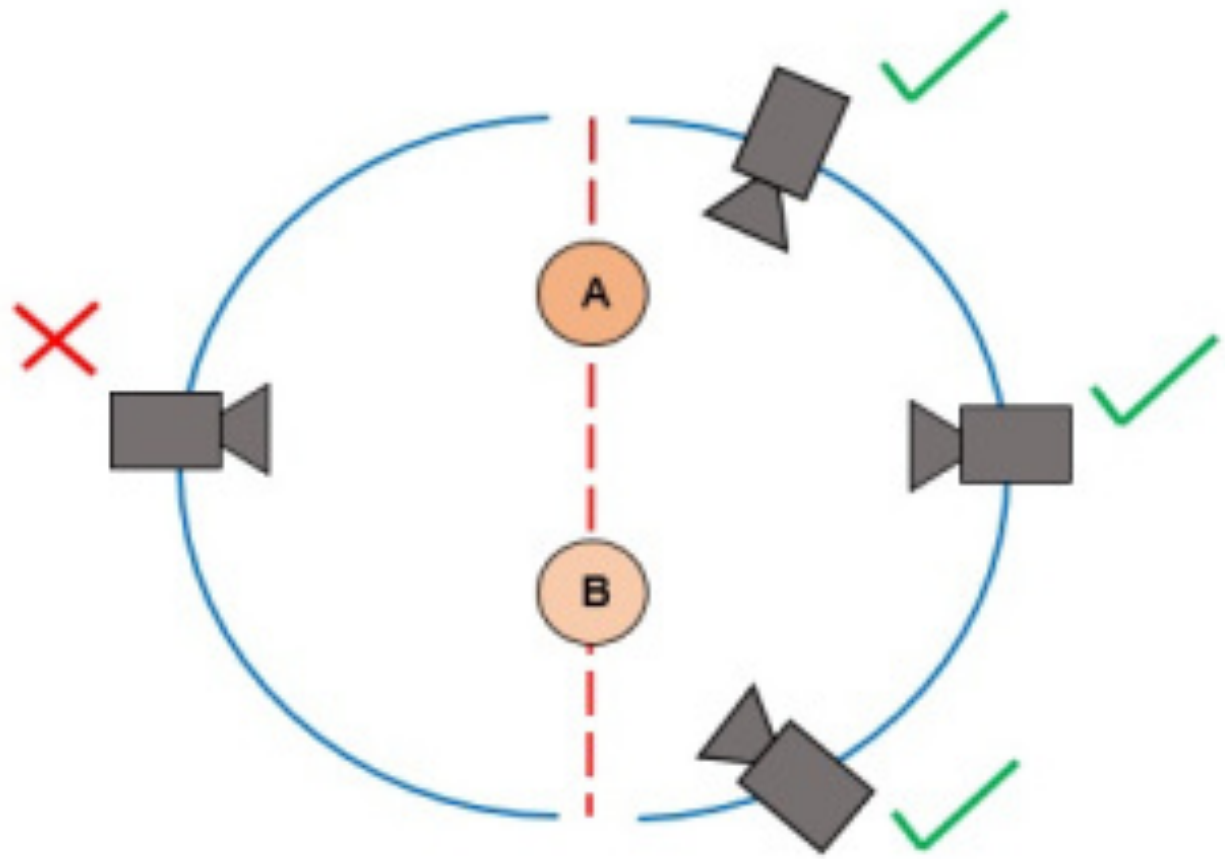
Cinematography



180 DEGREE RULES

The 180° rule is a cinematography guideline that states that two characters in a scene should maintain the same left/right relationship to one another. When the camera passes over the invisible axis connecting the two subjects, it is called crossing the line and the shot becomes what is called a reverse angle.





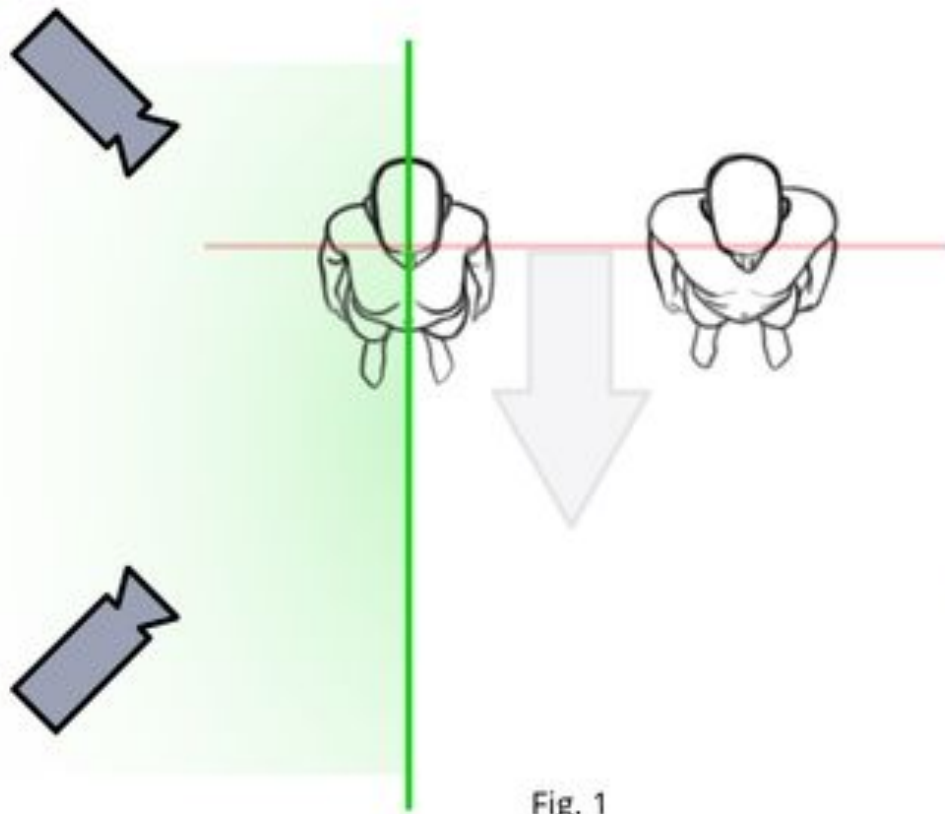


Fig. 1

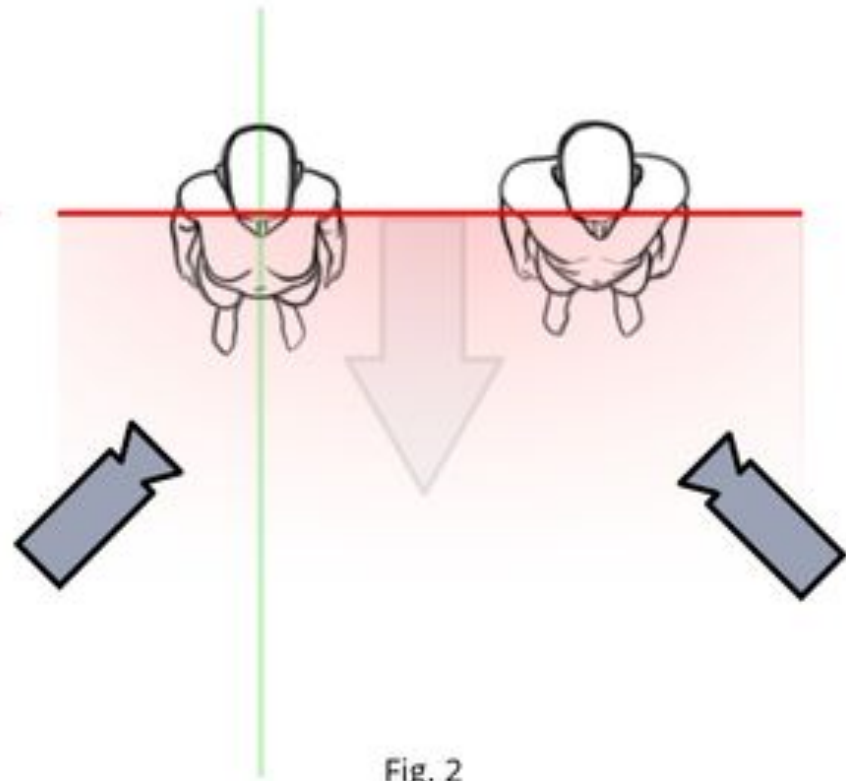
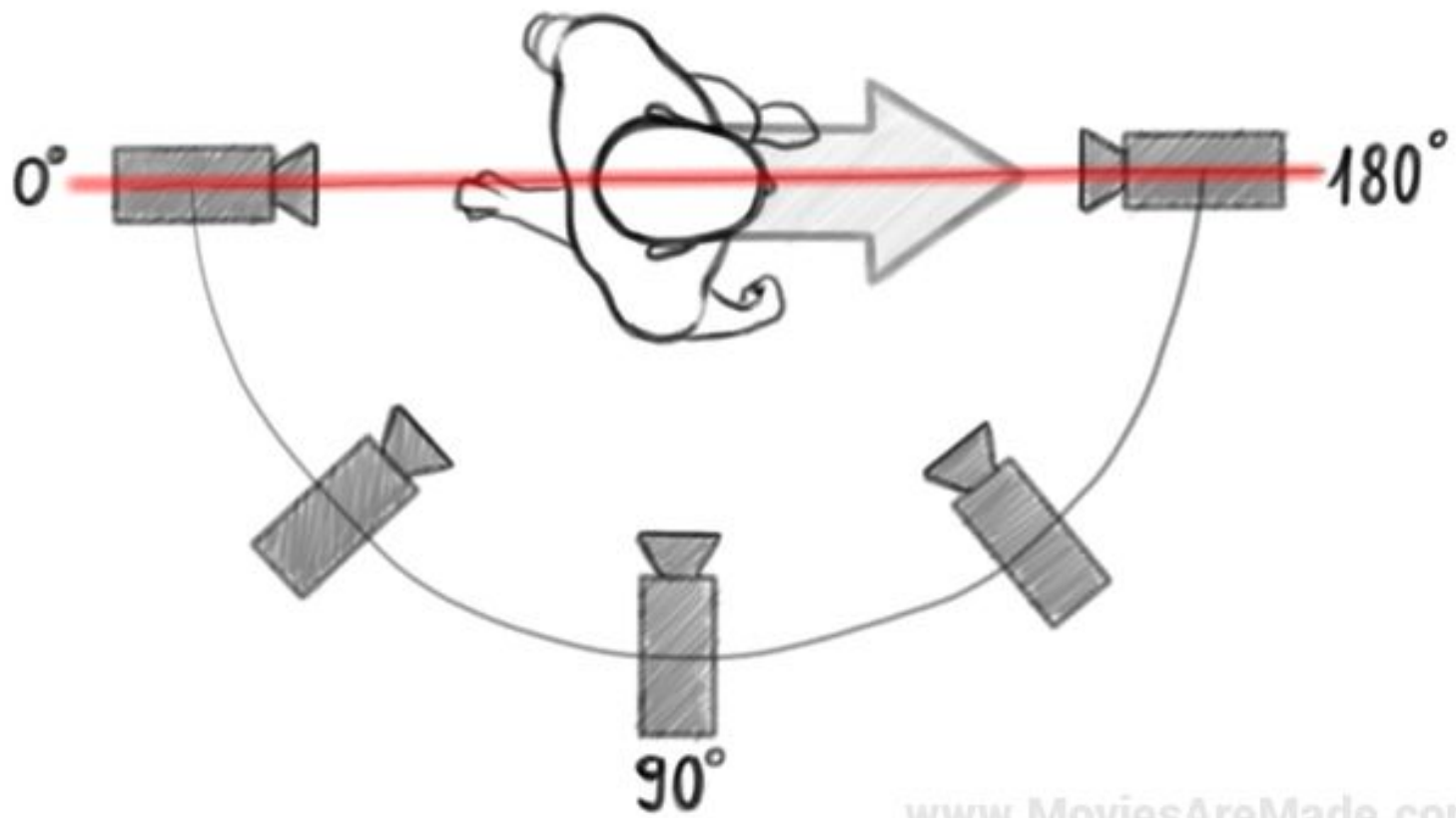


Fig. 2





www.MoviesAreMade.com



Fig. 1

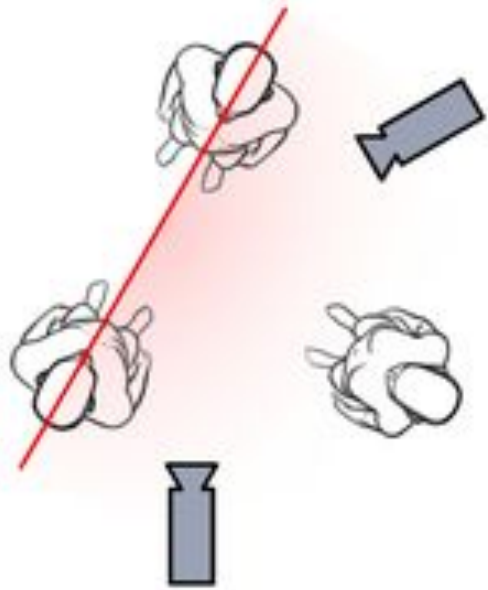


Fig. 2

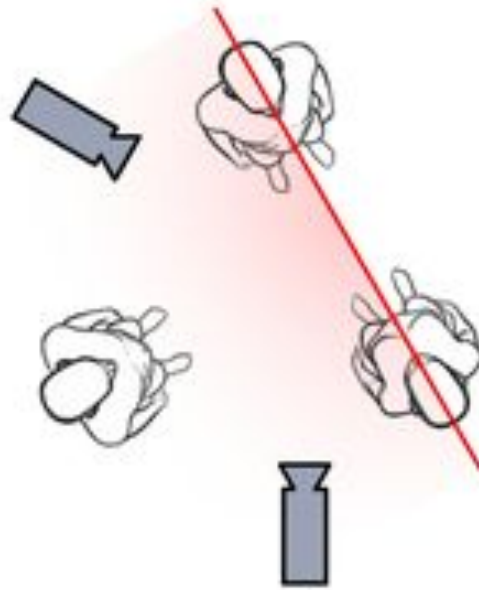
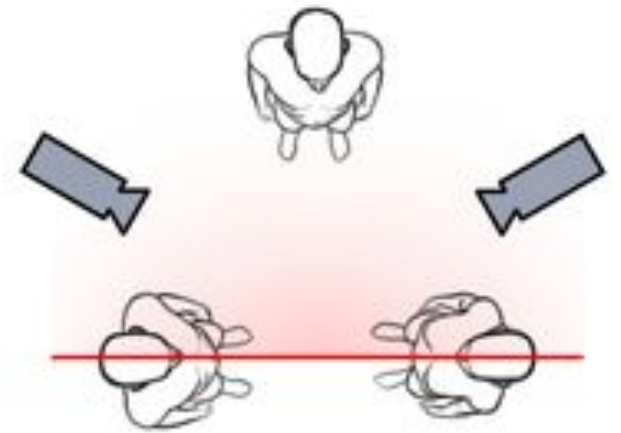


Fig. 3



www.MoviesAreMade.com



TYPES OF CONTINUITY

There are several categories of continuity:

- *Continuity Of Content*
- *Continuity of Movement*
- *Continuity of Position*
- *Continuity of Time*



CONTINUITY OF CONTENT



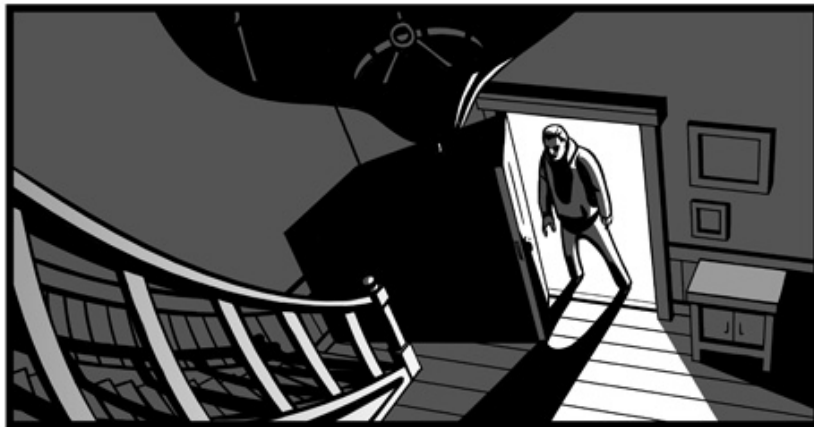
MASTER SHOT



SHOT REVERSE SHOT



CONTINUITY OF MOVEMENT



Frame 1

Int. Est. Shot of Chris entering the house. High angle shot with wide lens distorts the room.



Frame 2

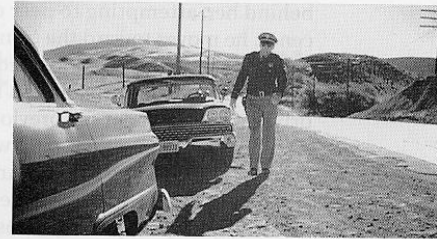
Medium shot as Chris climbs staircase to second floor. He pauses to sweep the flashlight ahead.



CONTINUITY OF POSITION



Setup A.



Setup B.



Setup D.



Setup E.



Setup G.



Setup H.



Setup I.



Setup K.



CONTINUITY OF TIME



